



STYLE DIRECTIONS BAGS SEASON HIGHLIGHTS

**AUTUMN WINTER
2016 -2017**

MUST HAVES FOR WOMEN

AUTUMN WINTER

2016 -2017

WOMEN'S MUST-HAVES AW 2016 -2017

GEOMETRICAL FRAGMENTS

Broken lines, concentric circles.
Kinetic abstraction of graphic
patterns on rigid structures. Bowler
bags, totes and clutch bags with
handles.



Tosca Blu



Bevini Modena



Regenesi



Corsoundici



Azzurra Gronchi

METALSHINER

Metal decorations.

Mirror effects, leather with a metallic finish, shimmering finishings. Chains and metal links. Light grey soft leather, white finish. Asymmetrical cuts designed on front. Fur effect interpreted with 3D embroidery and plexiglass straws.



Ter



Visone



Giancarlo Petriglia



Ticercrea

ECLECTICISM New Class.

Bags with elaborate inlay design for the intellectual woman. Distinctive lines, cuts and innovative textures.

Semi-sharp volumes, embossed surfaces, decorative stitching. Metal fastenings with attitude.



Milan Street January 2016



Iaya Asciani



Three Foot Flower



Salar

RETRO FUTURE Craft Innovation.

Innovative leather like the American Shell Cordovan. Pony leather, hand brushed and applied in a 40s retro style.

Frames inspired by futuristic design objects. Rounded lines and top quality calf leather bands. Finely detailed metal craftsmanship.



Milan September 2015



Hiboy



Plinio Visonà



Hiboy

MASHING UP New patching.

Mix of styles and patterns, jacquard wool fabrics, laser-cut fur, reptile and colored leather. Wide bases and medium/large sizes.

Chains woven with leather and padded embroidery.



New York Street January 2016



Soraya Milano



Braccialini



Is Ioanna Solea

SEASON HIGHLIGHTS aw 2016 2017

ICONS bags are MINI

The iconic bags that are historically the most desirable ones, become mini bags, to match with the original volumes. With handles, and shoulder chain strap, covered frame, in exotic leather with logo.



FLAMBOYANT

Detail extravaganza.

Pad, expand, gather. Jewel bags with lush, captivating and fun surfaces. Nappa leather and velvet, satin and matelassé. Boston bags and flamboyant mini shoulder bags become the must-haves of the season, downplaying romanticism.



Paris Haute Couture January 2016



Fontanelli



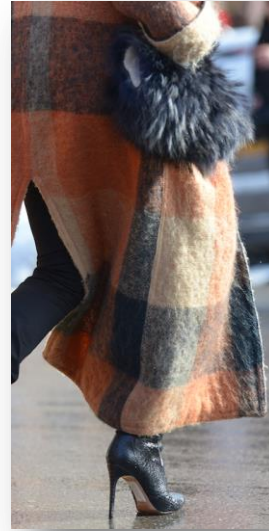
IS Ioanna Solea



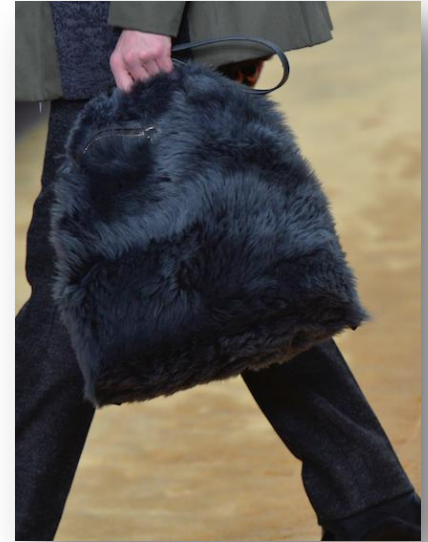
Harleq

WOOLLY FUR Melange and Mesh.

Real and faux fur melange. Frisée effects, nuances and ruffled textures. Fur mixed with wool yarns and treated on the finished garment. Overdyed fur with a shading effect.



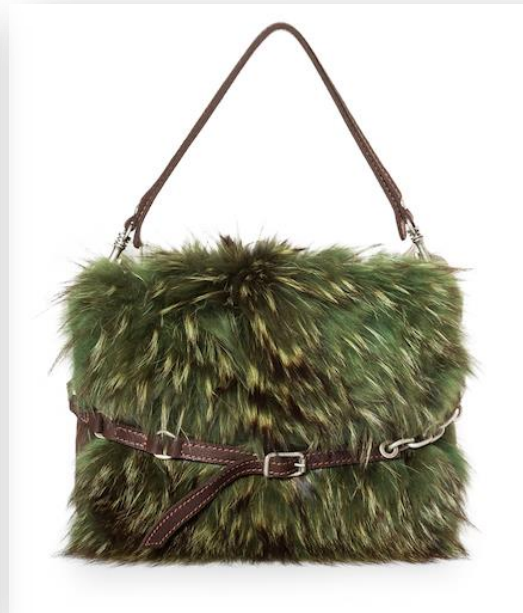
New York Street



Fendi



Lanzetti



Campomaggi



Filippo Fanini

MUST-HAVES MEN

AUTUMN WINTER

2016 -2017

WINTER SKI RESORT One-of-a-kind.

Made for iconic top-luxury winter city living: Saint Moritz, Zermat, Courchevel. Innovative models, paired with unique details, old and new.. Maxi bags covered in innovative felt. Stretched pony skin leather, contrasting stitching, sleek hand-made vegetarian leather, nabuk sued feel.



Engineered
Garments



Campomaggi



Interno 24 Re-Design



Arcadia



Carl Laich

BRUSH COLORS Artistic surfaces.

Innovative chromatic interpretations on a leather base that are best colored with brushstrokes or sponging.

The polishings shine up and brighten large and sharp volumes.

Satchels and doctor bags and sharp totes.



Peroni Firenze



Pratesi



Antonio Marras



Thom Browne

ON-THE-GO Global Business

Superb leather. Brushed, neat and clean. Refined and high-tech. Oversized volumes, perfect for the contemporary man. Functional and refined. Raw edges, ergonomic handles, minimal details. Function is the essence.



Andrea Incontri



Florence January 2016



Bottega Veneta

GENDERLESS MUST-HAVES

AUTUMN WINTER

2016 -2017

DESTRUCTURED VINTAGE Contemporary.

Natural leather, reptile, calf leather and nappa with refined grains. Sophisticated treatments to regenerate thermo-fused leather. Drawstring bags and body dress totes. Urban, modern, globe-trotter.



Corsia



Andrea Incontri



Simona Tagliaferri



Edmos

UTILITARIAN Sport Tech.

Unisex ergonomics. Modular combinations that highlight angles and asymmetric volumes through double folded calf leather. Total black vegetable leather paired with textured nylon.



Mr Gherardini



Tratakan



Louis Vuitton



Animadverte



Positive Causes

SARTORIAL TRAVELLER

Techno materials.

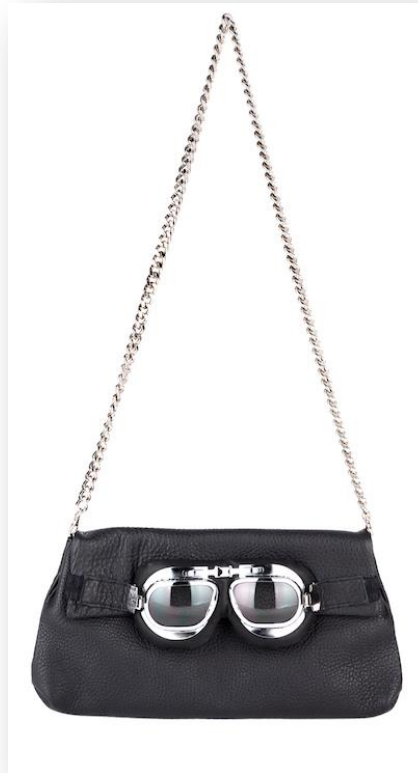
Technical sophistication and sartorial details. Macro-metal details for impressive accessories. Synthetic and carbonium. Perforated, doubled and sanded nappa leather.



Paris January 2016



Crispino Valentino



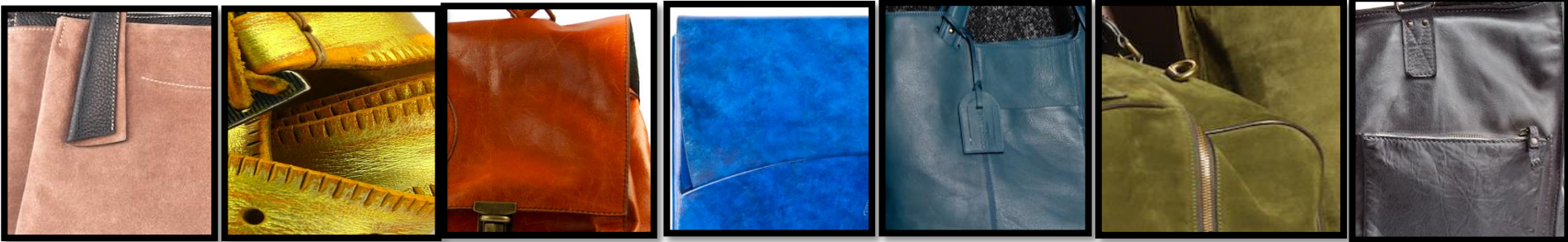
Poshead



Bric's

MEN'S COLOR HIGHLIGHTS AW 2016 2017

New contemporary colors. Dusty and dark. Green black, electric blue, grey black, tanned brown, dirty beige, lemon yellow.



WOMEN'S COLOR HIGHLIGHTS AW 2016 2017

Bold colors that emphasize the beauty of the leather. Bright orange, automotive red, fuchsia, petroleum green, saffron, dusty powder beige.



Studio Mattori
Via Candiani 23, 20158- Milan